



aspirators

# aspirators

*Optimal secretion management  
with Double Filter System DFS®*



## ASSKEA „S“-Series

The ASSKEA “S”-Series units are mains-operated aspirators which will draw out secretions, body fluids and the liquids used for flushing in typical treatment of upper respiratory congestion.

The optimal use of the “S”-Series is for inpatients; however, it also finds application in homecare and rehabilitation in the domestic setting.



## ASSKEA „M“-Series (analogue, digital)

The ASSKEA “M”-Series units are self-contained, do not require mains electricity and will provide temporary aspiration of secretions, body fluids and the liquids used for flushing on an outpatient or, preferably, spontaneous basis. Especially worth mentioning are the ease of handling, the advanced battery management and the efficient use resulting from electronic vacuum control.



## Double Filter System DFS®

Get the benefit of true anti-overflow security with the DFS® system. True security with reconditioning at the highest standard and most reasonable price yet achieved by an aspirator manufacturer. DFS® means the best in aspirator safety over the longest lifetime.

Immediately after a blockage is registered in the tube connector, the system stops the suction process. The interior of the unit is immediately and conclusively protected from contamination. In case of a blockage the DFS(R) can simply be exchanged so that the unit can go straight back into use.



## ASSKEA - suction units for inpatient or outpatient aspiration – plus safety and efficiency!

The ASSKEA aspirators are medical suction units for temporary and particularly spontaneous removal of secretions.

- Functional design
- Easy to use
- High safety in use
- DFS<sup>®</sup> - Double filter system protects the internal of the unit from contamination

### Indications

- Laryngectomized and tracheotomized patients
- Muscular or neurological disorders with obstruction of the respiratory function
- Aspiration of blood, secretion and food from the mouth, the nose and throat and the bronchial system



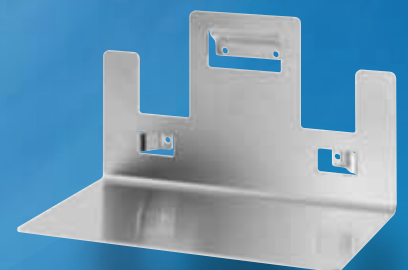
## Accessories – for use with all types of ASSKEA units

### Canister:

- ASSKEA reusable canister system (1.000 ml)
- ASSKEA disposable canister system (1.000 ml)

### Holders:

- Universal bracket for ASSKEA aspirators  
Item no.: 100288
- Bed and stative holder  
Item no.: 100346
- Wall holder stainless steel  
Item no.: 100704





## ASSKEA „S”-Series

- mains powered medical suction units for inpatients
- nominal mains voltage: 230V AC 50–60Hz
- analogue units



### ASSKEA S20K

- Item no. (REF): 100011
- Suction power: 18 liters/min +/-2liters
- Operating time: 20 minutes ON, 40 minutes OFF
- HiMi no.: 01.24.01.0023 (German medical aids code)



### ASSKEA S20

- Item no. (REF): 100009
- Suction power: 18 liters/min +/-2liters
- Operating time: continuous
- HiMi no.: 01.24.01.0024 (German medical aids code)



### ASSKEA S30

- Item no. (REF): 100010
- Suction power: 28 liters/min +/-2liters
- Operating time: 180 minutes ON, 60 minutes OFF
- HiMi no.: 01.24.01.1016 (German medical aids code)

## ASSKEA „M”-Series (analogue, digital)

- mobile medical suction units, independent of mains electricity
- choice between analogue and digital models
- nominal voltage of power supply 100–240V AC 50–60Hz primary / 12V DC secondary

### Analogue aspirators



### ASSKEA M20

- Item no. (REF): 100003
- Suction power: 18 liters/min +/-2liters
- Operating time: 45 minutes ON, 10 minutes OFF
- HiMi no.: 01.24.01.0018 (German medical aids code)



### ASSKEA M20PLUS

- Item no. (REF): 100003PLUS
- Suction power: 22 liters/min +/-2liters
- Operating time: 40 minutes ON, 10 minutes OFF
- HiMi no.: 01.24.01.0018 (German medical aids code)



### ASSKEA M30PLUS

- Item no. (REF): 100004PLUS
- Suction power: 30 liters/min +/-2liters
- Operating time: 40 minutes ON, 10 minutes OFF
- HiMi no.: 01.24.01.1015 (German medical aids code)

### Digital aspirators



### ASSKEA M20D

- Item no. (REF): 100005
- Suction power: 18 liters/min +/-2liters
- Operating time: 45 minutes ON, 10 minutes OFF
- HiMi no.: 01.24.01.1017 (German medical aids code)



### ASSKEA M30D

- Item no. (REF): 100006
- Suction power: 26 liters/min +/-2liters
- Operating time: 40 minutes ON, 10 minutes OFF
- HiMi no.: 01.24.01.1017 (German medical aids code)

**ASSKEA**<sup>®</sup>  
medical

ASSKEA GmbH  
Haßlocher Str. 9  
99189 Gebesee / Germany

Telephone: +49 36201 57 97 - 0  
Fax: +49 36201 57 97 - 33

info@asskea.de  
www.asskea.de